



Geofence Activity with Auxiliary Inputs enhanced

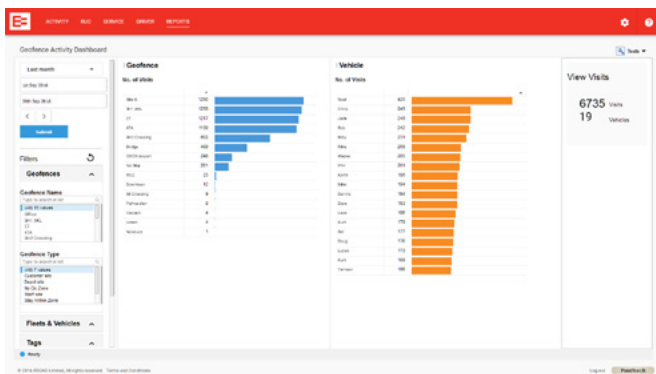
We've enhanced the Geofence Activity with Auxiliary Inputs feature. Fleet operators can now click through to a full view of an asset's activity for the day of the site visit. It means that you get more context about what's happening with your equipment on site, and gives you the power to investigate further if the site visit doesn't match the job schedule.

Input 1 Engaged Count	Input 1 Time (hh:mm)	Input 2 Engaged Count	Input 2 Time (hh:mm)	Input 3 Engaged Count	Input 3 Time (hh:mm)
1	01:20	0	00:00	0	00:00
1	00:04	0	00:00	0	00:00
0	00:00	0	00:00	0	00:00

Keep a close eye on key assets

The new Geofence Activity with Auxiliary Inputs helps you optimise productivity, supports accurate billing and lets you compare actual activity of auxiliary equipment against scheduled commitments.

You know your digger is on site, but is it just sitting there? You can now track where and when your auxiliary equipment is in use. Geofence Activity with Auxiliary Inputs lets you see the time and duration of use, and distance travelled on site of key assets.

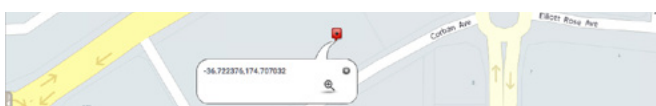


Introducing Latitude and Longitude Search

Our new Latitude and Longitude Search lets you enter latitude and longitude coordinates into the Activity screen search bar, with the results centred and marked on the map.

You can identify the landing sites of your load, create precision geofences, and pinpoint areas for health and safety purposes.

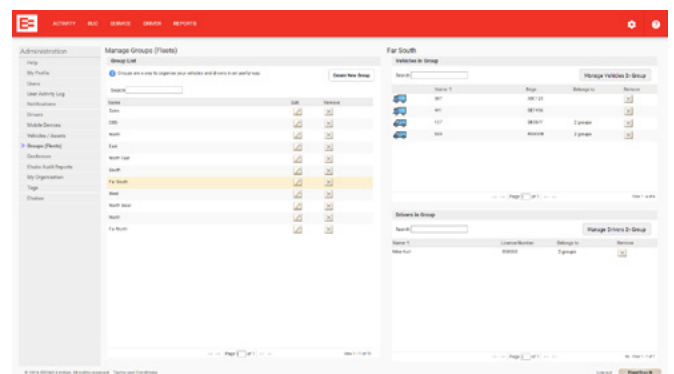
Latitude and Longitude Search can also take coordinates copied and pasted from other tools including Google Maps.



Introducing Groups – Better fleet management

Our powerful new Groups give Unit Managers an additional way to monitor and report on organisational units. Your existing Fleets have become Groups. Groups can be set up to include vehicles, drivers or both.

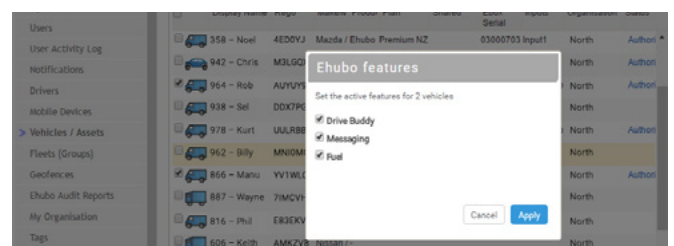
Once drivers are added to Groups by Client Administrators, anyone with suitable access permissions can see them. It means that Unit Managers have increased visibility of the people behind the wheel, leading to improved driver performance and better health and safety outcomes.



Manage Ehubo2 features in Depot

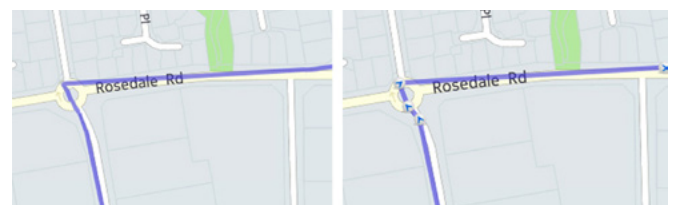
You can now customise your fleet's Ehubo2 units and control the range of features available to your drivers. Turning features on or off is easy, and requires just a few clicks in Depot.

Keep it simple by removing features you don't need from selected Ehubo2s, and manage the introduction of new features with a phased, company-wide roll out that suits your business's requirements and schedule.



Daily Activity Report – improved journey lines

We've given more detail to the journey line in the Daily Activity Report. When zoomed in, the directional markers give a more accurate view of vehicle movement, particularly around corners, sharp turns and roundabouts.

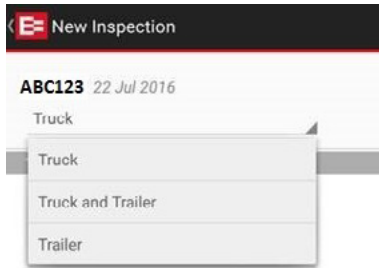


Introducing driver messaging

With the latest version of the **EROAD Driver** app – 2.4.1 – messaging is an easy way to stay in touch with drivers in or away from the vehicle to assign jobs, reorganise routes or suggest rest breaks to help keep your drivers safe and compliant.

DVIR Trailer-only checklist now available

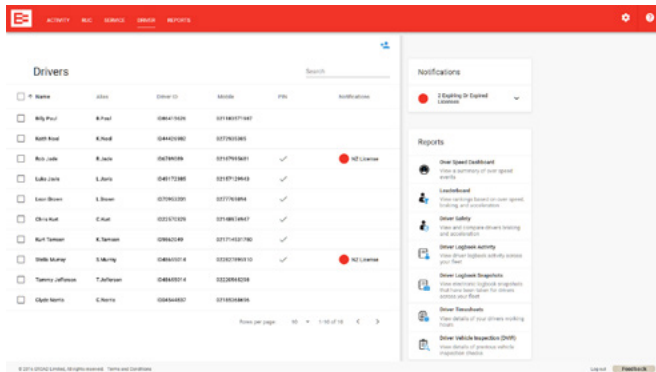
With the latest version of the **EROAD Driver** app, drivers can complete a trailer-only vehicle inspection checklist. Drivers now have three checklists to choose from.



Introducing Driver tab

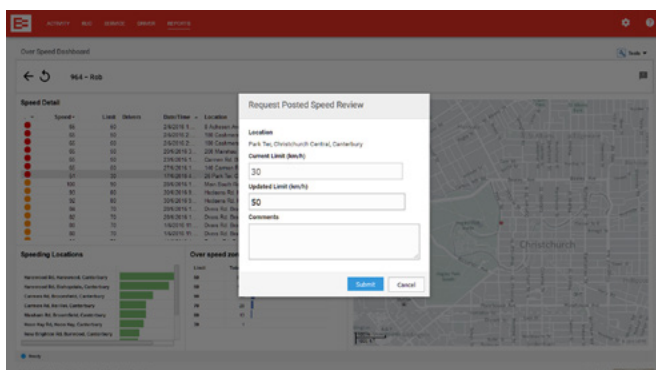
The Driver tab has all the information you need to manage your drivers. The Driver tab simplifies administration by helping you keep an eye on licences and expiry dates, and giving you quick access to driver reports.

Note, this update replaces the previous version of Driver, which was accessed through the Settings menu. To open the new tab, click on 'DRIVER' in the red navigation bar.



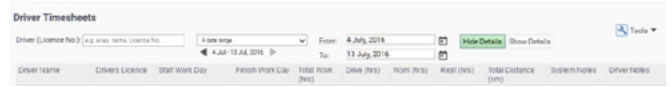
Over Speed reporting - Submit speed review requests

We have replaced the old Over Speed Report with an Over Speed Dashboard that offers more insights into driving behaviour and lets you track trends over time. We hope you've found switching to the new Over Speed Dashboard easy. You can still tell us if Depot shows inaccurate speed limits, but from now on you do it in the Over Speed Dashboard. If you've previously scheduled over speed reports, you'll still receive them in your email inbox.



Electronic Logbook – Driver Timesheets improvements

Driver Timesheets calculate work, drive and rest hours as logged by your drivers in EROAD Electronic Logbook. To allow for increased flexibility, we have fine-tuned the date picker so that you can view hours for a customised date range and see driver journeys that continue across the end of a week or month.



EROAD Share – Work safer together

EROAD Share supports organisations that work together and enables secure sharing of vehicles in Depot.

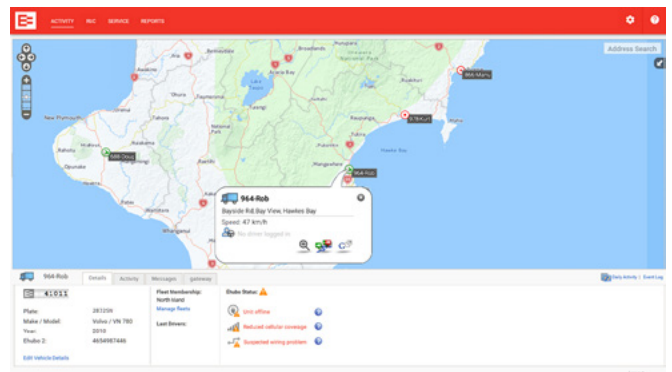
With this release, managing workplace risks and duty of care obligations for all vehicles on your watch just got a whole lot easier as the performance of shared vehicles can now be monitored on the **Leaderboard**, **Over Speed Dashboard** and **Driver Insight** reports.

Safe driving can be encouraged and acknowledged across organisations, helping you lift the overall standard.

	Trend	Rank Change	Shared By
★★★★★	→	0	→
★★★★★	→	0	→
★★★★★	→	0	→
★★★★★	→	0	ABC Holdings Limited →
★★★★★	→	0	ABC Holdings Limited →
★★★★★	→	0	→
★★★★★	→	0	→
★★★★★	↗	+2	→

Ehubo – Introducing Ehubo status panel in Depot

The new Ehubo status panel in Depot enables you to effectively monitor the health of your EROAD in-vehicle hardware units in Depot. Pick up issues in a timely manner and take action immediately to avoid complications later on.



Keep up to date with our product updates:
www.eroad.co.nz/nz/blog