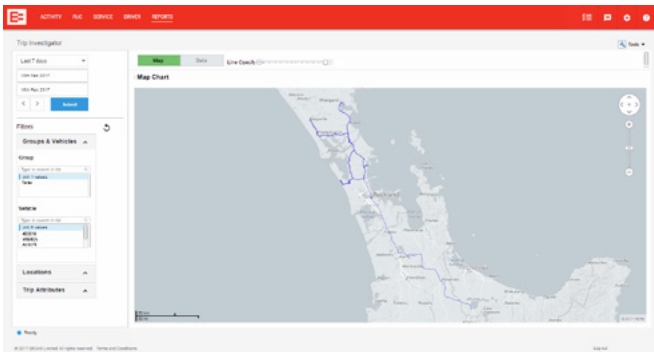




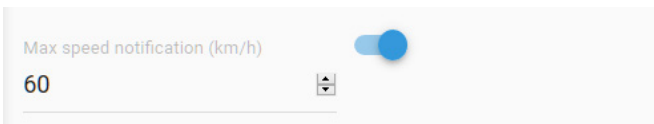
Introducing Trip Investigator

Increase your fleet productivity and provide proof to your customers that you are meeting travel time Service Level Agreements (SLAs) by using the Trip Investigator. The map view lets you see all of your vehicle trips and if drivers are following your designated routes. Now you can easily compare trips to fine tune your schedules and routes. The data view details all time and location stops to check for unexpected trip activity.



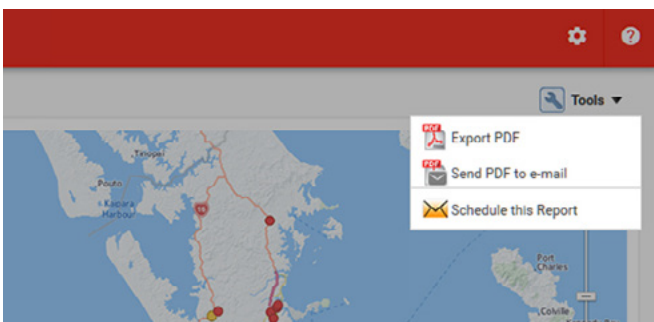
Introducing Max Speed Alert

Max Speed Alert supports safe driving by sending you real-time notifications of excessive speeding. Create an email alert for light or heavy vehicles, trailers and assets, and set the speed at which the alert is triggered. The notifications instantly give you all the information you need, with location, date, vehicle, and driver details. By identifying exceptional driving events, Max Speed Alert encourages your drivers to self-manage their speed, helping to maintain your ORS rating while protecting themselves, the public and your business's reputation.



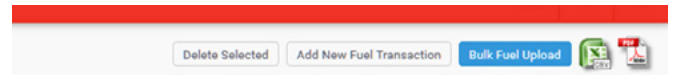
Driver Safety Report adds PDF export

We've added the ability to export the Driver Safety Report as a PDF file. Driver Safety Reports give you a simple view of harsh braking and sharp acceleration events, and pinpoint location danger spots. The ability to export reports as PDFs means you can print or email them, making them ideal for use in driver training programmes.



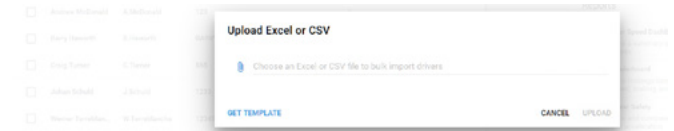
Fuel Transaction Management made easier and faster

We've made the Fuel Transaction Management module even easier to use. The sample fuel file is now in both XLS and CSV formats, making it compatible with more systems. We've also streamlined the upload process, so that it's no longer compulsory to fill in every single field. Finally, you can now delete more than one fuel transaction at a time. The result of these changes is a simpler, quicker fuel transaction process.



Introducing Driver Management: Bulk Import & Export

The new Driver Management: Bulk Import and Export feature makes it quicker and easier to manage your drivers' information. You can edit information for individuals or your whole team in one go, while the standard spreadsheet formats – Excel and CSV – make for easy compatibility with external systems.



Geofence Activity with Auxiliary Inputs enhanced

We've enhanced the Geofence Activity with Auxiliary Inputs feature. Fleet operators can now click through to a full view of an asset's activity for the day of the site visit. It means that you get more context about what's happening with your equipment on site, and gives you the power to investigate further if the site visit doesn't match the job schedule.

	Input 1 Engaged Count	Input 1 Time (hh:mm)	Input 2 Engaged Count	Input 2 Time (hh:mm)	Input 3 Engaged Count	Input 3 (hh:mm)
	1	01:20	0	0:00	0	
	1	00:04	0	0:00	0	
	0	00:00	0	0:00	0	

Keep a close eye on key assets

The new Geofence Activity with Auxiliary Inputs helps you optimise productivity, supports accurate billing and lets you compare actual activity of auxiliary equipment against scheduled commitments.

You know your digger is on site, but is it just sitting there? You can now track where and when your auxiliary equipment is in use. Geofence Activity with Auxiliary Inputs lets you see the time and duration of use, and distance travelled on site of key assets.

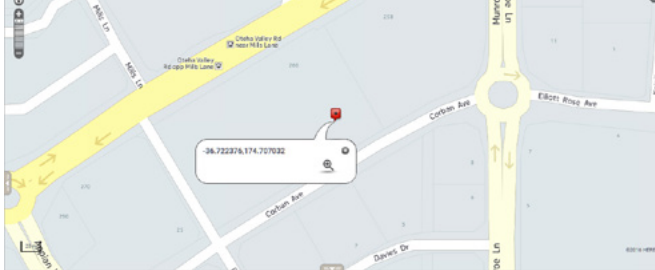


Introducing Latitude and Longitude Search

Our new Latitude and Longitude Search lets you enter latitude and longitude coordinates into the Activity screen search bar, with the results centred and marked on the map.

You can identify the landing sites of your load, create precision geofences, and pinpoint areas for health and safety purposes.

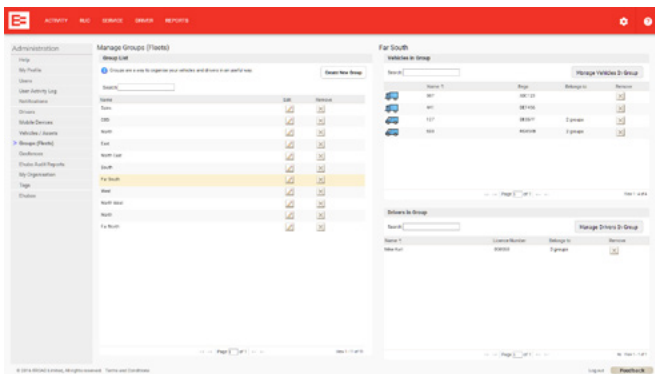
Latitude and Longitude Search can also take coordinates copied and pasted from other tools including Google Maps.



Introducing Groups – Better fleet management

Our powerful new Groups give Unit Managers an additional way to monitor and report on organisational units. Your existing Fleets have become Groups. Groups can be set up to include vehicles, drivers or both.

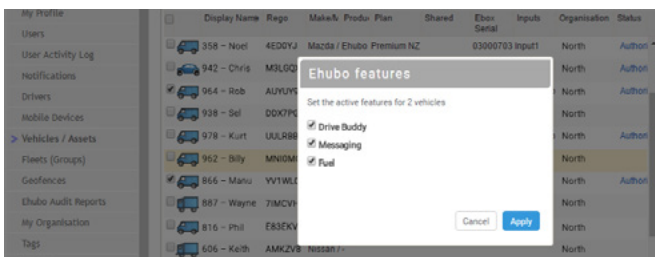
Once drivers are added to Groups by Client Administrators, anyone with suitable access permissions can see them. It means that Unit Managers have increased visibility of the people behind the wheel, leading to improved driver performance and better health and safety outcomes.



Manage Ehubo2 features in Depot

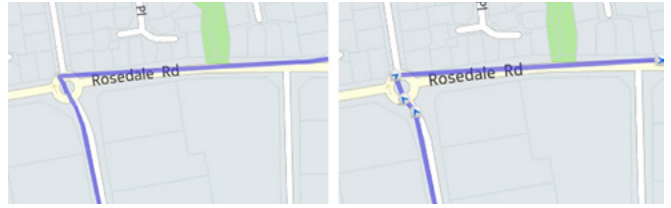
You can now customise your fleet's Ehubo2 units and control the range of features available to your drivers. Turning features on or off is easy, and requires just a few clicks in Depot.

Keep it simple by removing features you don't need from selected Ehubo2s, and manage the introduction of new features with a phased, company-wide roll out that suits your business's requirements and schedule.



Daily Activity Report – improved journey lines

We've given more detail to the journey line in the Daily Activity Report. When zoomed in, the directional markers give a more accurate view of vehicle movement, particularly around corners, sharp turns and roundabouts.



EROAD Driver app gets messaging upgrade

With the latest version of the **EROAD Driver** app – 2.4.1 – messaging is an easy way to stay in touch with drivers in or away from the vehicle to assign jobs, reorganise routes or suggest rest breaks to help keep your drivers safe and compliant.

DVIR Trailer-only checklist now available

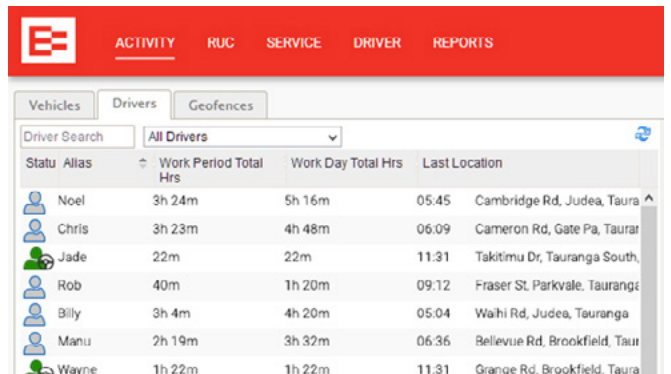
With the latest version of the **EROAD Driver** app, drivers can complete a trailer-only vehicle inspection checklist. Drivers now have three checklists to choose from.



Introducing Driver tab

The Driver tab has all the information you need to manage your drivers. The Driver tab simplifies administration by helping you keep an eye on licences and expiry dates, and giving you quick access to driver reports.

Note, this update replaces the previous version of Driver, which was accessed through the Settings menu. To open the new tab, click on 'DRIVER' in the red navigation bar.



Keep up to date with our product updates:
www.eroad.co.nz/nz/blog